

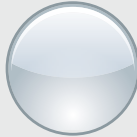
LENS ROMA



CHARAKTERISTIK:



Narrow



Polished



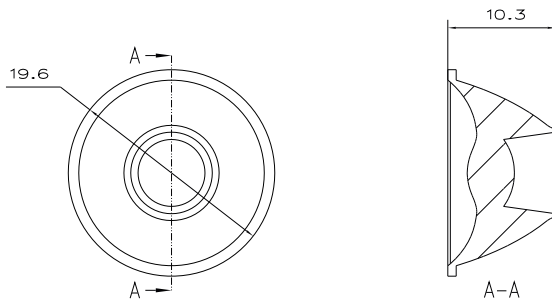
PMMA



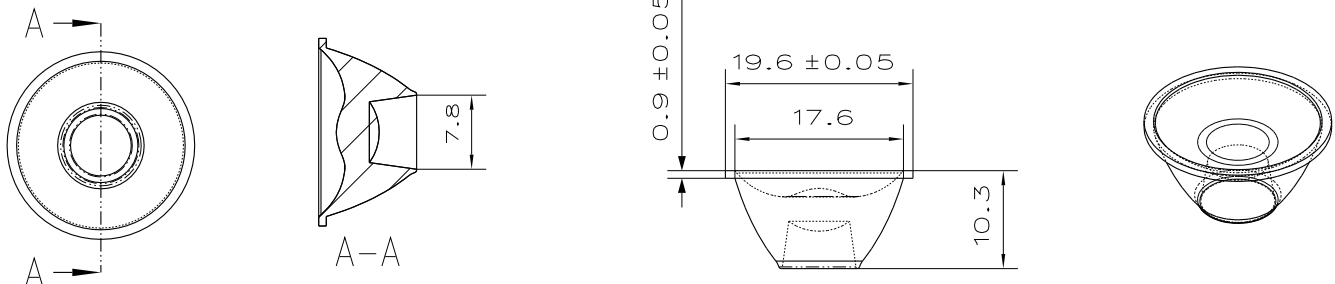
LENS ROMA

Artikel-Nr.:	L051-BP-502
Typ:	Single Reflector Lens
Diameter:	19.6 mm
Höhe:	10.3 mm
Charakteristik:	Narrow
Oberfläche:	Polished
FWHM:	10.0°
Effizienz theoretisch:	88 %
Material:	PMMA

Alle Angaben / Maße sind Circa-Angaben und unverbindlich, technische Änderungen vorbehalten.
Unverbindliche Labormesswerte bezogen auf eine Referenz LED.



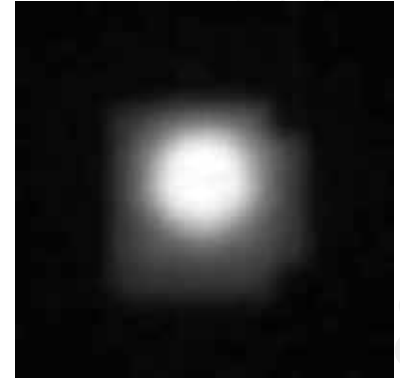
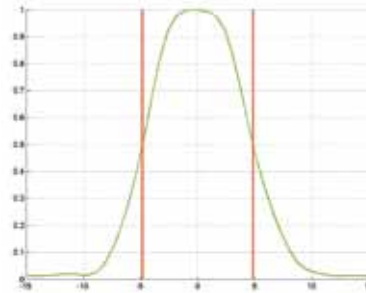
- » Geeignet für kompakte Einbausituationen für eine Vielzahl von Chipgeometrien
- » Transparente Lichtaustrittsfläche
- » Abstrahlcharakteristik Narrow



CREE XR-E

Strahldaten

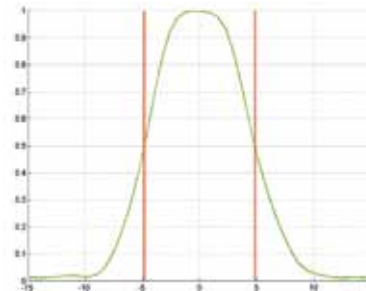
FWHM 9.7°



CREE MX-6

Strahldaten

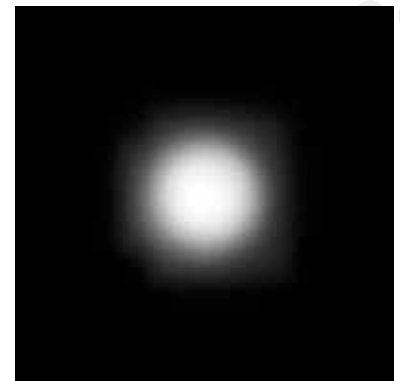
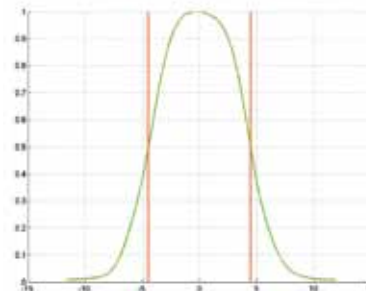
FWHM 8.9°



CREE XP-G2

Measured Values

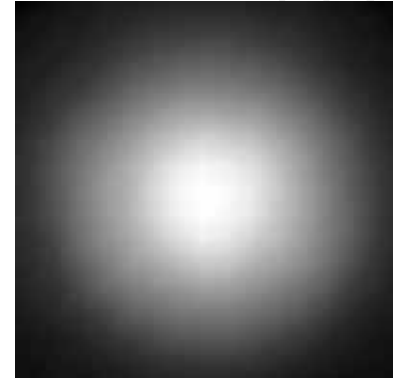
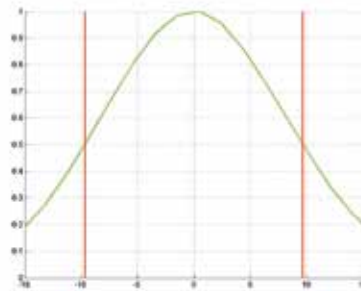
FWHM 8.9°



NICHIA 183

Strahldaten

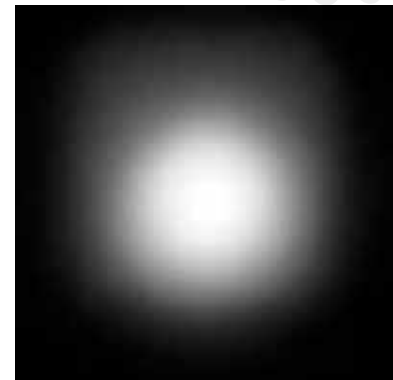
FWHM 19.4°



NICHIA 219

Strahldaten

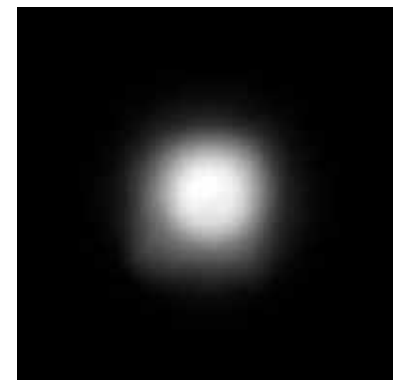
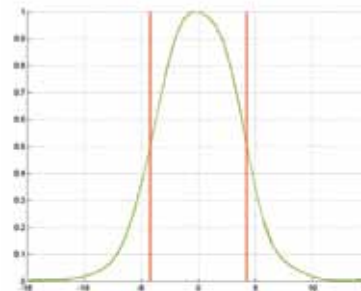
FWHM 14.2°



OSRAM Opto Semiconductors SSL150

Strahldaten

FWHM 8.5°

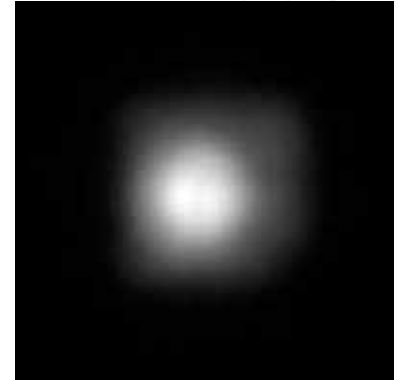
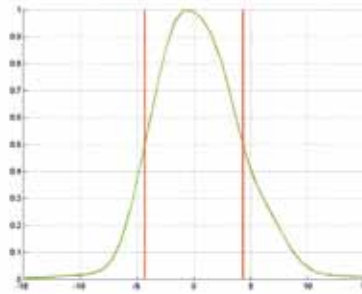


OSRAM

Opto Semiconductors
SSL80

Strahldaten

FWHM 8.6°

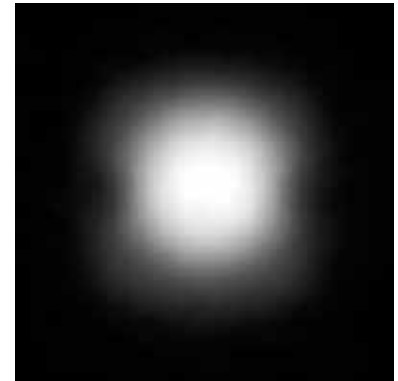
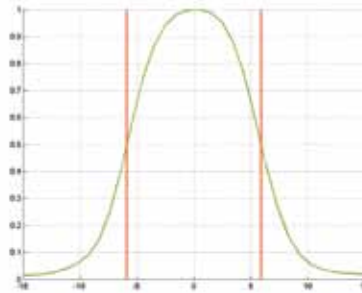


OSRAM

Opto Semiconductors
Oslon Square

Strahldaten

FWHM 11.8°

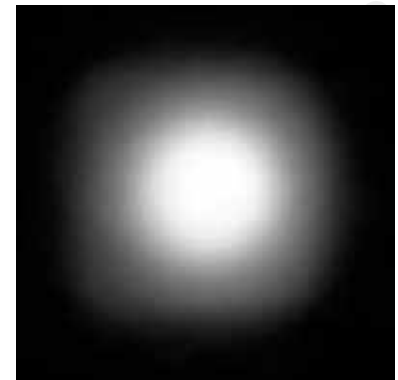
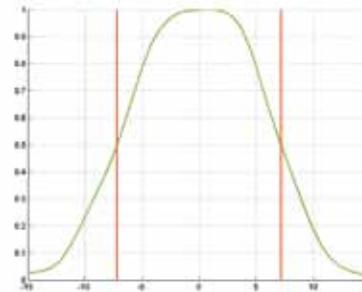


PHILIPS

Luxeon A

Strahldaten

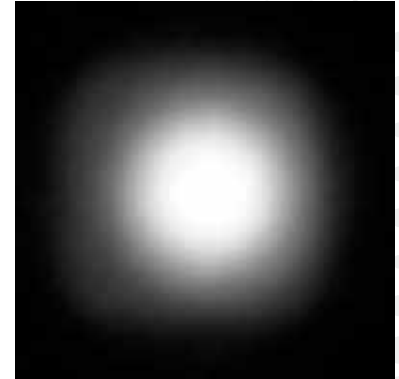
FWHM 14.4°



PHILIPS Luxeon R

Strahldaten

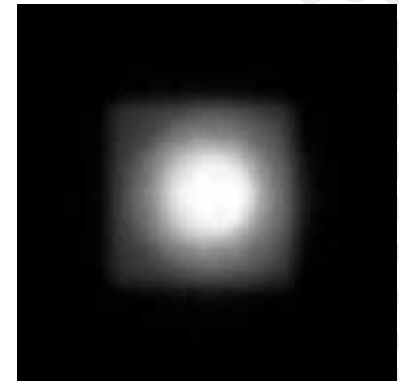
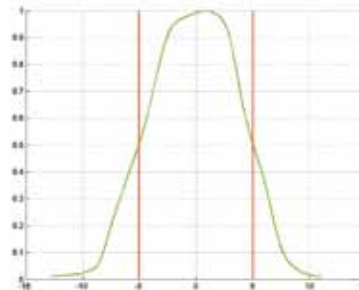
FWHM 14.3°



PHILIPS Luxeon Rebel

Strahldaten

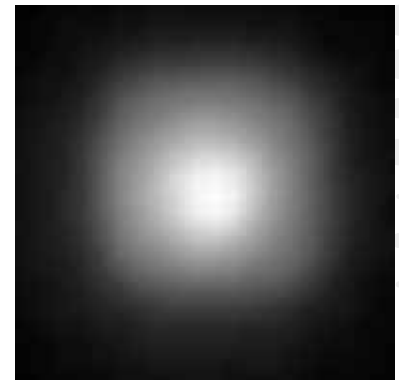
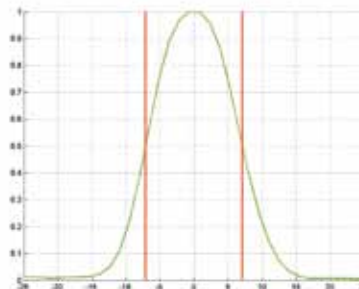
FWHM 10.0°



PHILIPS Luxeon T

Strahldaten

FWHM 14.4°



SAMSUNG

3535

Strahldaten

FWHM 12.1°

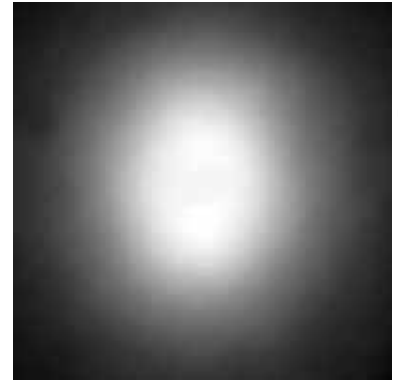
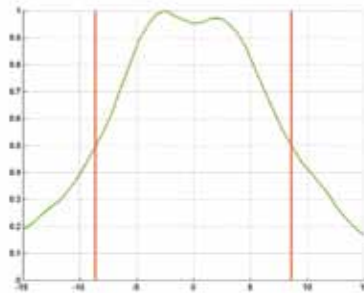


SEOUL

Z1

Strahldaten

FWHM 8.0°



SEOUL

Z5

Strahldaten

FWHM 8.0°

